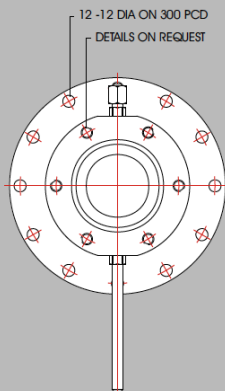
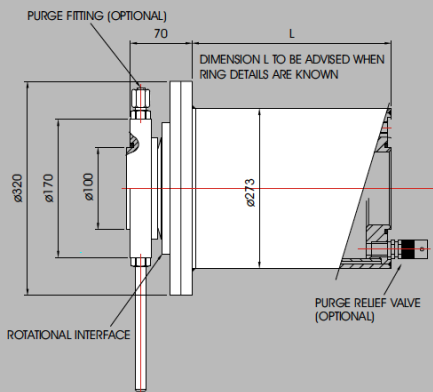


For Surface and Subsea Umbilical Winches
 Stainless Steel IP66 Housing
 Gas Purge Option
 300 Amp 3300 Volt Rings

OPTIONS

- Drive and mounting arrangement to suit Customer's requirements
- Gas purged
- Oil filled pressure compensated
- Cable hose adaptors
- Junction box
- Gas / Fluid Swivel (inert gases only)
- Fibre Optic Rotary Joint



Detailed drawing provided upon placing order

OPERATING SPECIFICATION

Ambient Temperature Range	-20 °C to +40 °C standard (alternative range on request)
Maximum Speed	40 rpm (higher on request)
Maximum Voltage	6kV ac (dependent on current)
Maximum Current	300 Amps/Ring (higher on request)
Number of Rings	Up to 120 (dependent on current)

TECHNICAL DETAILS

Connections	Factory fitted flying leads or cost option plug and socket connectors
Flying Leads	Non PVC Insulated 3m long as standard
External Materials	Stainless Steel
Bearings	Sealed for life ball journal
Slip Rings	Phosphor bronze (precious metal plated for signals)
Brushes	Copper graphite for power, silver graphite for signals
Fasteners	Stainless steel metric